

Thank you for volunteering to work on the **TOWARD 2050** Blankets
Your efforts are so appreciated!

STEP 1 WORKSHEET

TOWARD 2050, culminated in an immersive labyrinth installation at Desert Botanical Garden in Phoenix, AZ - and now as that display comes down on June 1st, 2025, we enter into the last and important phase of the project - making blankets by re-purposing the Toward 2050 flags to donate to communities that will suffer future climate catastrophes.

Our goal is to make at least 200 blankets that will likely be distributed to multiple locations depending on when we receive finished blankets and where they are needed.

There are three aspects to the process in preparing for, and making the blankets:

STEP 1 - PREP, SORT, CURATE FLAGS for Blanket Tops

THIS STEP IS FOR LOCAL PHOENIX METRO MAKERS ONLY!

Sort through approx. 100 flags to cut from the strands, square up for easy piecing later, and curate in sets of 30 blocks ready for the next step of making blanket tops.

This step will require your discerning opinion as to what flags are still usable for the blanket top blocks, putting sets of 30 pleasing blocks together, what flags might be used as plain fabric for assembling blanket backing only, and flag fabric that may no longer be able to be used.

READ THE BACK OF THIS SHEET FOR DETAILED INSTRUCTIONS FOR THIS STEP IN THE PROCESS.

STEP 1 DATES

STEP 1 Packages will be available by June 20th, 2025
Our goal is to complete this step by July 15th, 2025

STEP 2 - Make Blanket TOPS ONLY

PACKAGES CAN BE SENT TO MAKERS IN ANY U.S. LOCATION.

Makers sew together the blanket tops only. Tops will be then used by another maker to fully complete the finished blanket.

DETAILED INSTRUCTIONS FOR THIS STEP IN THE PROCESS ARE INCLUDED ON A SEPARATE INFORMATION SHEET.

STEP 2 DATES

Materials for STEP 2 will be available by July 18, 2025 (or before)
Our goal is to complete this step on or before October 5, 2025

STEP 3 - Make FULL BLANKETS

PACKAGES CAN BE SENT TO MAKERS IN ANY U.S. LOCATION.

Make a full blanket using 30 pre-sorted blocks OR a pre-sewn blanket top. (This means - piecing/or using the top, creating a full back, include batting and quilting together with finished binding).

DETAILED INSTRUCTIONS FOR THIS STEP IN THE PROCESS ARE INCLUDED ON A SEPARATE INFORMATION SHEET.

STEP 3 DATES

Groups of separate blocks will be available by July 18, 2025 (or before)
OR if using a pre-made blanket top, by October 10, 2025
Our goal is to complete the blankets on or before April 15, 2026

TELL OTHERS ABOUT MAKING TOWARD 2050 BLANKETS
COMPLETING OUR GOAL DEPENDS ON SPREADING THE WORD !

*TOWARD 2050 has reached across 46 American states, DC and 9 countries.
It is organized by Arizona-based artist Ann Morton and commissioned by Desert Botanical Garden | dbg.org*



toward2050az.com

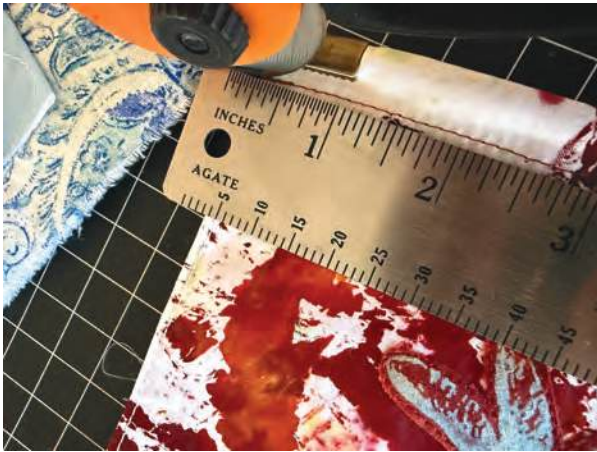
STEP 1 PROCESS

Assess the viability of each flag and only cut flags that are suitable to be used in making blanket tops. Weathering, size, or extreme fading* may be considered.

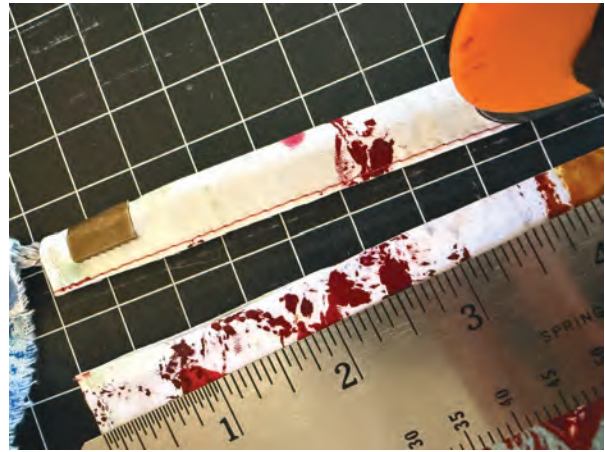
**some fading is OK and part of the story of this project!*

Makers are asked to use best judgement when trimming and sorting flags - The final blocks should measure $9\frac{1}{2}'' \times 9\frac{1}{2}''$. (Some hems may need to be taken out to achieve the $9\frac{1}{2}''$ width, but hopefully any edge seams can be cut off without too much extra work.) FLAG BLOCKS MUST BE TRUE AND SQUARE AND EXACTLY $9\frac{1}{2}'' \times 9\frac{1}{2}''$ TO ACCOMMODATE EFFICIENT PIECING OF BLANKET TOPS. Rotary blades, cutting mat and ruler are so helpful.

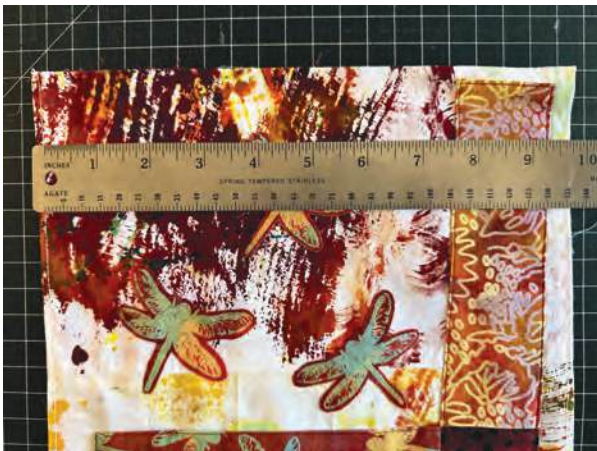
For flags that are just plain fabric w/ no extra embellishments - cut and save for use on blanket backs. Compile groups of 30 flags that will be used on a single blanket top. Blocks for back use are in addition to the groups of 30 for the front blanket top. RETURN ALL MATERIALS, USED OR NOT. Organize and label in groups of 30 for top, plain blocks for use on blanket back, and unused fabrics. Leave all original name/location tags intact.



1 Cut flag from strand just below the pocket seam line. Take care that the cut is straight and square. Rotary cutters used against a ruler will yield the best results.

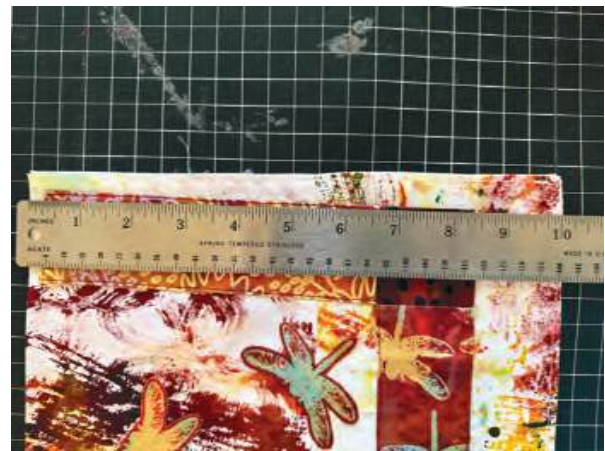


2 Pocket with seam is separated from the main body of flags (both sides).



OVERALL WIDTH

3 Square the top cut, measure across width to cut to $9\frac{1}{2}''$ wide. Cut off each side, or shift to use best judgement based on flag design.

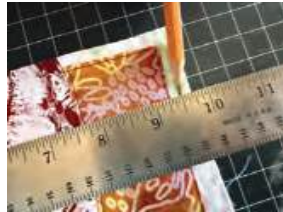


OVERALL LENGTH

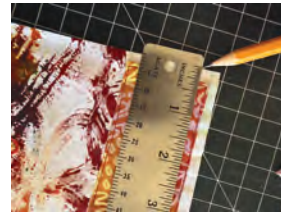
4 Square the top cut, measure top to bottom to cut to $9\frac{1}{2}''$ long. Cut top and/or bottom to best enhance flag design.



LEFT



RIGHT



TOP



BOTTOM

MAILING

Mail or deliver finished work to: ANN MORTON / TOWARD 2050
1420 East Berridge Lane Phoenix, AZ 85014-1748

QUESTIONS? Contact: Ann Morton - ann@toward2050az.com

© 2025 Ann Morton